



## Killer whales of Sea Lion Island

# Ale - ESRG\_001

### PREVIOUS NAMES AND CODES

None

FIRST SEEN: 2012

SIZE: Small

SEX: Unknown

### NOTES

Likely son of Lola; always associated with Lola.

### FEATURES

#### - General

Dark grey in colour with lighter saddle patch. Most characteristic feature is a scar on the fin. Also, it has many scars on the back, both right and left side (possibly all these features due to a boat collision). Saddle patch finishes towards the front of the animal with a very long and thin barb (only visible if the animal emerges a lot)

#### - Right side

Lots of lines, from light to dark grey in colour. Most peculiar ones are:

R1) A whitish, almost horizontal line, ending with three downward barbs almost in the middle of the patch

R2) A reversed, grayish, left inclined letter "V", just on the left of the saddle patch. It is not clearly visible in every picture

R3) An almost vertical, curved whitish line between on the left of R2

R4) A group of three crossing long curved lines, close to the tail end. Only visible when the animal lifts the bottom part

#### - Left side

Lots of lines, from light to dark grey in colour. Most peculiar ones are:

L1) Four short, whitish, almost parallel and vertical signs on the back of the whale towards the tail. Together with L2 it is the most distinctive feature on the left side.

L2) An almost black (lighter inside) sign composed of three thick lines, resembling a claw mark, just on the bottom left of L1. This, together with two almost vertical lines underneath, resemble a  $\Pi$  symbol

L3) Quite a few long and short lines, a little less marked, on the left and below L1/L2

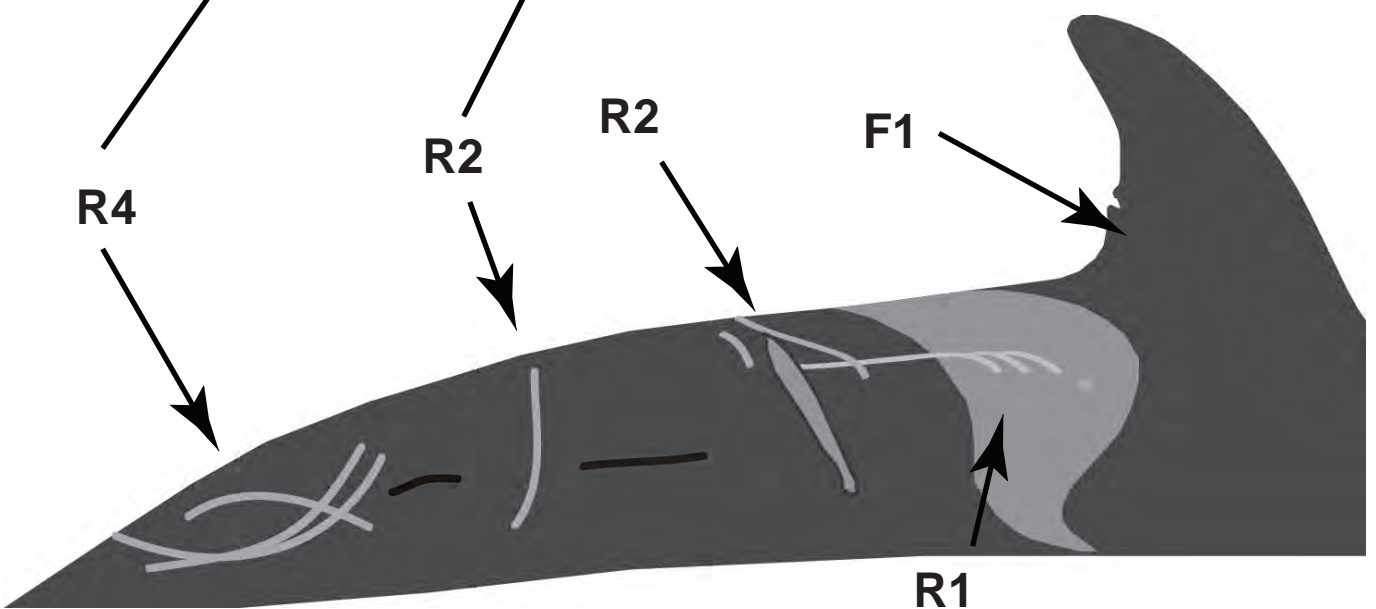
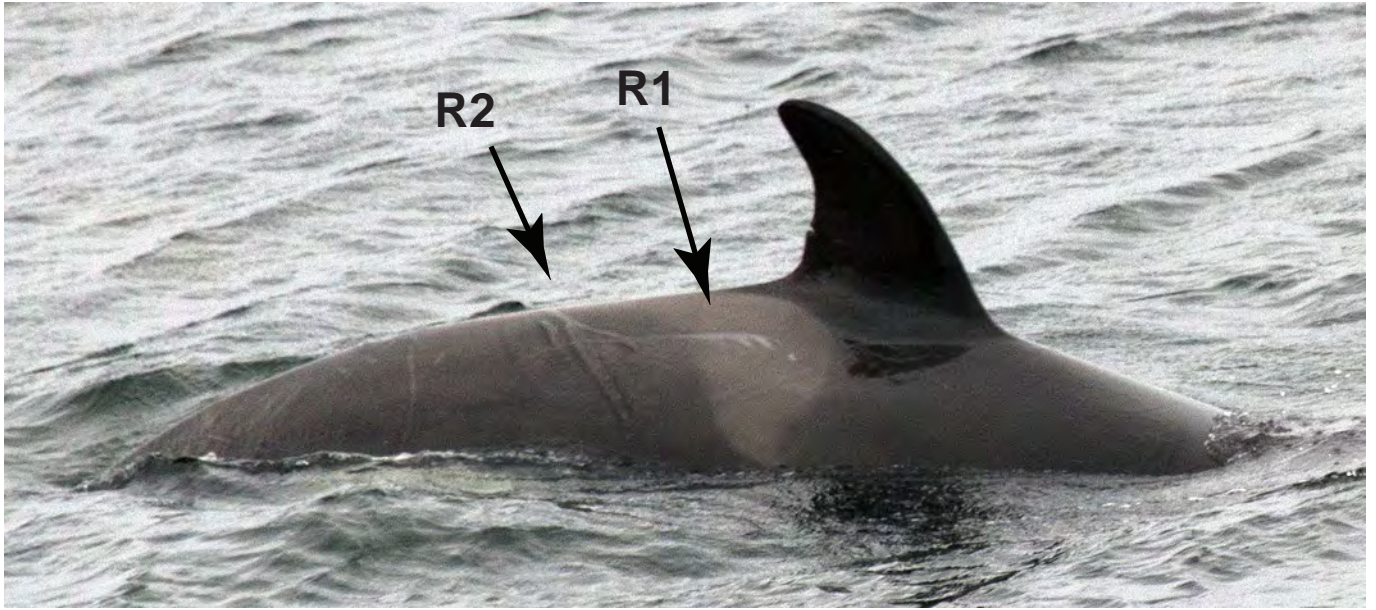
#### - Fin

Small but wide fin

F1) A small cut creating sort of a notch on the back edge. Depending on the picture it is more or less visible and more or less open

F2) A very short light grey line on close to the front edge of the left side

# Right side



# Left side

